



## Mouse anti Myosin Heavy Chain, Cardiac, Monoclonal Antibody

Alternative Name(s): MYH6, Alpha Myosin Heavy Chain, cardiac; MHC

### Order Information

- **Description:** Myosin Heavy Chain, Cardiac
- **Catalogue:** 603-820
- **Lot:** See label
- **Size:** 100ug/200ul
- **Host:** Mouse
- **Clone:** 9G11
- **Application:** IHC(P), WB
- **Reactivity:** Hu, Ms, Rt, Bv

### **ANTIGEN PREPARATION**

The recombinant protein of human myosin heavy chain recombinant protein.

### **BACKGROUND**

Muscle myosin is a hexameric protein that consists of 2 heavy chain subunits (MHC), 2 alkali light chain subunits (MLC) and 2 regulatory light chain subunits (MLC-2). Cardiac MHC exists as two isoforms in humans, alpha-cardiac MHC and beta-cardiac MHC. These two isoforms are expressed in different amounts in the human heart. During normal physiology, beta-cardiac MHC is the predominant form, with the alpha-isoform contributing around only 7% of the total MHC. Mutations of the MHC genes are associated with several different dilated and hypertrophic cardiomyopathies

### **PURIFICATION**

The mouse IgG is purified by Protein A-Affinity Chromatography according to Isotyping

### **FORMULATION**

This affinity purified antibody is supplied in sterile Phosphatebuffered saline (pH7.2) containing antibody stabilizer

### **SPECIFICITY**

This antibody recognizes Myosin Heavy Chain, Cardiac protein. It cross reacts to human, mice, rat and bovine. The other species are not tested.

### **STORAGE**

The antibodies are stable for 24 months from date of receipt when stored at -20°C to -70°C. The antibodies can be stored at 2°C-8°C for three months without detectable loss of activity. Avoid repeated freezing-thawing cycles.

### **APPLICATIONS/SUGGESTED WORKING DILUTIONS\***

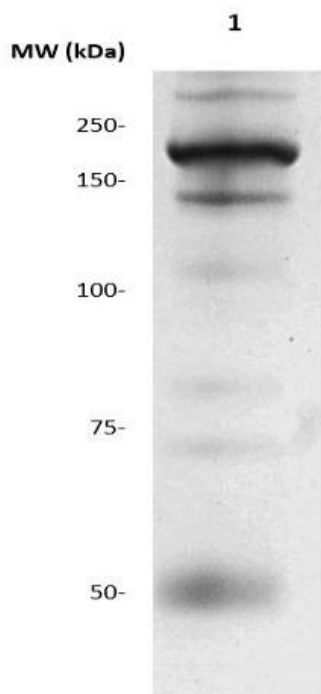
- Western Blot: 0.1-1 µg/ml
- ELISA: 0.01-0.1 µg/ml
- Immunoprecipitation: 2-5 µg/ml
- IHC: 2-10 µg/ml
- Flow cytometry: Not tested
- Molecular Weight: 200.0
- Positive Control: Kidney Tissue
- Cellular Location: Cell Membrane

\*Optimal dilutions should be determined by researchers for the specific applications.

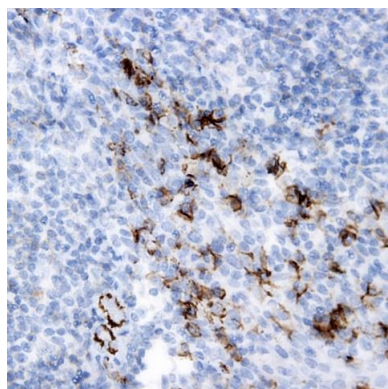
### **FOR RESEARCH USE ONLY.**

AbboMax, Inc 2528 Qume Drive, Suite 8, San Jose, California 95131, USA  
1 408-573-1898 (Tel). 1 408-573-1858 (Fax). [www.abbomax.com](http://www.abbomax.com) [info@abbomax.com](mailto:info@abbomax.com)

## DATA ATTACHMENTS



Western Blot: The whole cell lysate derived from RAT cardiac extract was separated in 10% SDS-PAGE, transferred onto NC membrane, and immunoblotted by Mouse anti – Myosin Heavy Chain (Cat#603-820) antibody at 1:500 . An major immunoreactive band around ~230 kDa was observed.



Immunohistochemistry: Human Tonsil (FFPE) stained with Mouse anti-Myosin Heavy Chain (Cat# 603-820) at 1:200 for 10 min @ RT. Staining of formalin-fixed tissue requires boiling tissue sections in 10 mM Citrate Buffer, pH 6.0 for 10 min followed by cooling at RT for 20 min.

## REFERENCES

### FOR RESEARCH USE ONLY.

AbboMax, Inc 2528 Qume Drive, Suite 8, San Jose, California 95131, USA  
1 408-573-1898 (Tel). 1 408-573-1858 (Fax). [www.abbomax.com](http://www.abbomax.com) [info@abbomax.com](mailto:info@abbomax.com)